



### Key personnel

- ◆ Head of School: Dr. Kevin Yoshihara ([kevin.yoshihara@kist.ed.jp](mailto:kevin.yoshihara@kist.ed.jp))
- ◆ Secondary School Principal: Mr. Mark Cowe ([mark.cowe@kist.ed.jp](mailto:mark.cowe@kist.ed.jp))
- ◆ IB DP Coordinator: Mr. Hiro Komaki ([hiro.komaki@kist.ed.jp](mailto:hiro.komaki@kist.ed.jp))
- ◆ University Counselor: Mr. Thomas Waterfall ([thomas.waterfall@kist.ed.jp](mailto:thomas.waterfall@kist.ed.jp))

### Mission

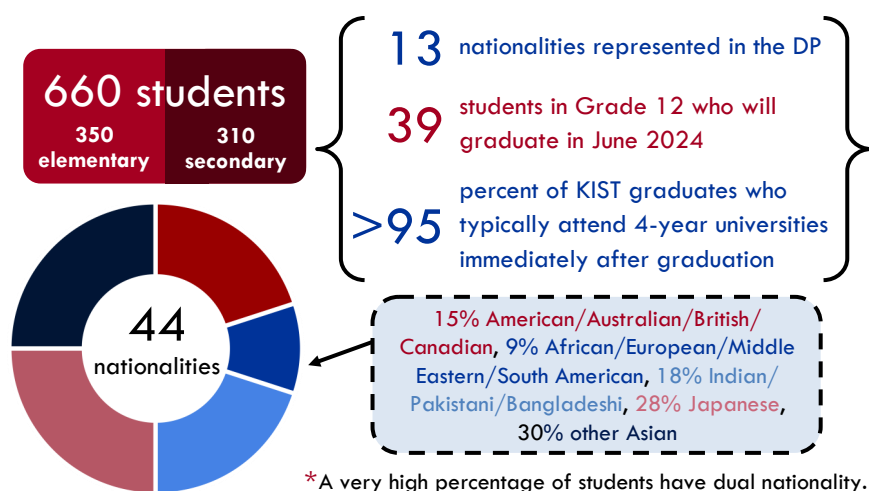
K. International School Tokyo provides academically motivated children from diverse cultural and social backgrounds with a high-quality education in a safe and supportive environment in order to develop competent, academic and compassionate individuals who make meaningful contributions to our global community.

### School overview

K. International School Tokyo (KIST) is a private, coeducational, non-denominational day school serving the international community of Tokyo from pre-Kindergarten through Grade 12. Authorized by the International Baccalaureate Organization as an IB World School, KIST is fully authorized to offer the Primary Years Programme (PYP) and the Diploma Programme (DP). Additionally, it is authorized by Pearson Education's Edexcel to deliver the IGCSE curriculum. KIST is accredited by the Council of International Schools (CIS) and is recognized as an educational foundation by the Tokyo Metropolitan Government. English is the language of instruction at all levels.

### Enrollment and admissions

At KIST, we have...



As an international school, KIST welcomes internationally-minded students, regardless of race, national or ethnic origin, religion, gender or socio-economic background who demonstrate a commitment to our mission and guiding beliefs.

To promote diversity, we maintain a balance of nationalities at each grade level, as well as in individual classes. We also ensure that the balance of nationalities and language groups is diverse, while at the same time does not compromise the position of English as the language of instruction.

### Staff

- 74** full time teachers
- 20** teachers hold postgraduate degrees (Master or PhD)
- 20** different nationalities of staff

### School year

KIST ensures a minimum of 180 days in the school year, divided into 2 semesters:

- ◆ Semester 1: August–December
- ◆ Semester 2: January–June

### Curriculum and grading in the DP

In Grades 11 and 12, all students are enrolled in the 2-year IB Diploma Programme. All students are required to study six subjects: a maximum of three at Standard Level (SL) and a maximum of four at Higher Level (HL). In addition, they must complete Creativity, Activity, Service (CAS); take a course in Theory of Knowledge (TOK); and write an Extended Essay of 4,000 words. School-based examinations take place throughout Grades 11 and 12, with externally set examinations at the end of Grade 12.

Academic achievement is graded on the IB 1 to 7 scale, with 1 being the lowest and 7 being the highest mark attainable. As an IB World School, it is our philosophy neither to rank students against each other nor to calculate grade point averages (GPA).

### IB grade descriptors

7: Excellent | 6: Very good | 5: Good | 4: Satisfactory | 3: Mediocre | 2: Poor | 1: Very poor

### IB DP subject options

The following courses are offered during the 2022–24 DP cycle:

- ◆ English A Language and Literature HL/SL
- ◆ Japanese A Language and Literature HL/SL
- ◆ Japanese B HL/SL
- ◆ French AB initio SL (Online)
- ◆ Spanish B SL (Online)
- ◆ Spanish AB initio SL (Online)
- ◆ Business Management HL/SL
- ◆ Economics HL/SL
- ◆ Geography HL/SL
- ◆ History HL/SL
- ◆ Psychology SL (Online)
- ◆ Biology HL/SL
- ◆ Chemistry HL/SL
- ◆ Environmental Systems and Societies SL
- ◆ Physics HL/SL
- ◆ Mathematics A&A HL/SL
- ◆ Mathematical A&I SL
- ◆ Visual Arts HL/SL

A variety of online course options are also available through the IB affiliated Pamoja Education.

In 2023, 19% of KIST students attained a Bilingual IB Diploma.

### Graduation requirements

To graduate with an IB Diploma, students must meet all external requirements set by the International Baccalaureate. These include a minimum score of 24 in six subjects, as well as successful completion of the TOK, Extended Essay, and CAS components.

To graduate with a KIST High School Diploma, students must successfully complete all course requirements for Grade 11 and 12, a research paper, and service program contributions.



## DP results 2021 to 2023

| Year of graduation       | 2023        | 2022        | 2021        |
|--------------------------|-------------|-------------|-------------|
| KIST DP average          | <b>41.1</b> | <b>42.1</b> | <b>42.3</b> |
| IB DP world average      | 30.2        | 32.0        | 33.0        |
| KIST highest DP score    | <b>45</b>   | <b>45</b>   | <b>45</b>   |
| KIST G12 graduates       | 37          | 35          | 41          |
| KIST G12 DP graduates    | 32          | 33          | 41          |
| % of students in full DP | <b>86%</b>  | <b>94%</b>  | <b>100%</b> |
| # Diplomas attained      | 32          | 33          | 41          |
| % attaining Diplomas     | <b>100%</b> | <b>100%</b> | <b>100%</b> |

## Class of 2023 results

|   |            |
|---|------------|
| Number of students with 45 points in the DP           | <b>4</b>   |
| Percent of students with 45 points in the DP          | <b>13%</b> |
| Number of students with 40 points or above in the DP  | <b>25</b>  |
| Percent of students with 40 points or above in the DP | <b>78%</b> |

## DP results for the class of 2023 (for courses offered at KIST)

| DP Subject                   | # of students | % of students attaining |      |      | School | World | KIST +/-    |
|------------------------------|---------------|-------------------------|------|------|--------|-------|-------------|
|                              |               | 7                       | 6    | 5    |        |       |             |
| English A L&L HL             | 18            | 39%                     | 56%  | 6%   | 6.30   | 4.79  | <b>1.51</b> |
| English A L&L SL             | 14            | 21%                     | 29%  | 36%  | 5.57   | 4.87  | 0.70        |
| Japanese A L&L HL            | 5             | 0%                      | 100% | 0%   | 6.00   | 5.04  | 0.96        |
| Japanese A L&L SL            | 1             | 0%                      | 100% | 0%   | 6.00   | 4.71  | <b>1.29</b> |
| Japanese B HL                | 10            | 100%                    | 0%   | 0%   | 7.00   | 6.30  | 0.70        |
| Japanese B SL                | 12            | 92%                     | 8%   | 0%   | 6.92   | 5.26  | <b>1.66</b> |
| Japanese ab initio SL        | 4             | 100%                    | 0%   | 0%   | 7.00   | 4.73  | <b>2.27</b> |
| Business Management HL       | 9             | 44%                     | 56%  | 0%   | 6.44   | 4.94  | <b>1.50</b> |
| Business Management SL       | 1             | 0%                      | 100% | 0%   | 6.00   | 4.94  | <b>1.06</b> |
| Economics HL                 | 10            | 30%                     | 40%  | 30%  | 6.00   | 5.10  | 0.90        |
| Economics SL                 | 10            | 50%                     | 30%  | 10%  | 6.20   | 4.75  | <b>1.45</b> |
| Geography HL                 | 6             | 50%                     | 50%  | 0%   | 6.50   | 5.24  | <b>1.26</b> |
| Geography SL                 | 4             | 25%                     | 75%  | 0%   | 6.25   | 4.80  | <b>1.45</b> |
| Biology HL                   | 7             | 43%                     | 43%  | 14%  | 6.29   | 4.39  | <b>1.90</b> |
| Biology SL                   | 4             | 25%                     | 50%  | 25%  | 6.00   | 4.15  | <b>1.85</b> |
| Chemistry HL                 | 13            | 62%                     | 38%  | 0%   | 6.62   | 4.56  | <b>2.06</b> |
| Chemistry SL                 | 4             | 25%                     | 75%  | 0%   | 6.25   | 4.10  | <b>2.15</b> |
| Environmental Sys. & Soc. SL | 7             | 57%                     | 29%  | 14%  | 6.43   | 4.22  | <b>2.21</b> |
| Physics HL                   | 12            | 75%                     | 25%  | 0%   | 6.75   | 4.80  | <b>1.95</b> |
| Physics SL                   | 2             | 0%                      | 100% | 0%   | 6.00   | 4.21  | <b>1.79</b> |
| Mathematics A&A HL           | 8             | 100%                    | 0%   | 0%   | 7.00   | 4.87  | <b>2.13</b> |
| Mathematics A&A SL           | 14            | 100%                    | 0%   | 0%   | 7.00   | 4.61  | <b>2.39</b> |
| Mathematics A&I SL           | 10            | 100%                    | 0%   | 0%   | 7.00   | 3.87  | <b>3.13</b> |
| Visual Arts HL               | 2             | 0%                      | 0%   | 100% | 5.00   | 4.39  | 0.61        |
| Visual Arts SL               | 2             | 0%                      | 50%  | 50%  | 5.50   | 4.01  | <b>1.49</b> |

\*The above school averages are calculated for students who attained IB Diplomas

## University acceptances

Regularly, 100% of KIST graduates attain university/college acceptance. Some of the universities from which acceptances were attained include the following. \* indicates that a scholarship was awarded.

## Asia (excluding Japan)

Hong Kong University of Science and Technology\*  
Korea Advanced Institute of Science and Technology  
Manipal Institute of Technology  
Nanyang Technological Institute\*  
National University of Singapore\*  
New York University Abu Dhabi\*  
Seoul National University\*  
Tsinghua University  
University of Hong Kong\*  
Yale NUS College\*  
Yonsei University\* (Medicine)

## Australia

The Australian National University  
University of Melbourne\*  
University of New South Wales\*  
University of Queensland  
University of Sydney\* (Medicine)

## Canada

McGill University\*  
University of Alberta\*  
University of British Columbia\*  
University of Toronto\*  
University of Waterloo\*

## Europe

Delft University of Technology  
Ecole Hoteliere de Lausanne  
Eindhoven University of Technology  
Leiden University  
Masaryk University (Medicine)  
Simmelweis University (Medicine)

## Japan

Hiroshima University (Medicine)  
International Christian University\*  
Intl. University of Health and Welfare (Medicine)  
Juntendo University (Medicine)  
Keio University  
Kyushu University  
Nagoya University\*  
Okayama University (Medicine)  
Ritsumeikan University  
Sophia University\*  
Temple University Japan Campus\*  
Tokyo Medical and Dental University (Medicine)  
University of Tokyo\*  
Waseda University\*

## United Kingdom

Durham University  
Hull York Medical School (Medicine)  
Imperial College London  
King's College London  
London School of Economics  
University Arts London  
University of Cambridge\*  
University College London  
University of Bath\*  
University of Bristol  
University of Edinburgh  
University of Manchester\*  
University of St. Andrews  
University of the Arts London  
University of Warwick

## United States of America

Boston University\*  
Brandeis University  
Brown University  
California Institute of Technology  
Carnegie Mellon University\*  
Case Western Reserve University\*  
Dartmouth College  
Davidson College  
Duke University\*  
Georgia Institute of Technology  
Harvey Mudd College  
Johns Hopkins University  
New York University  
Northeastern University\*  
Occidental College  
Princeton University\*  
Purdue University  
Stanford University\*  
University of Chicago\*  
University of California Berkeley/Davis/  
Irvine/LA/San Diego/Santa Barbara\*  
University of Colorado at Boulder  
University of Illinois Urbana Champaign  
University of Michigan  
University of North Carolina at Chapel Hill  
University of Pennsylvania\*  
University of Rochester\*  
University of Southern California  
University of Washington  
University of Wisconsin Madison